



**Magaliesrivier Eiendomme Pty Ltd**

**Hornbill Lodge & Legends**

[www.hornbill.co.za](http://www.hornbill.co.za) / [cobie@hornbill.co.za](mailto:cobie@hornbill.co.za)

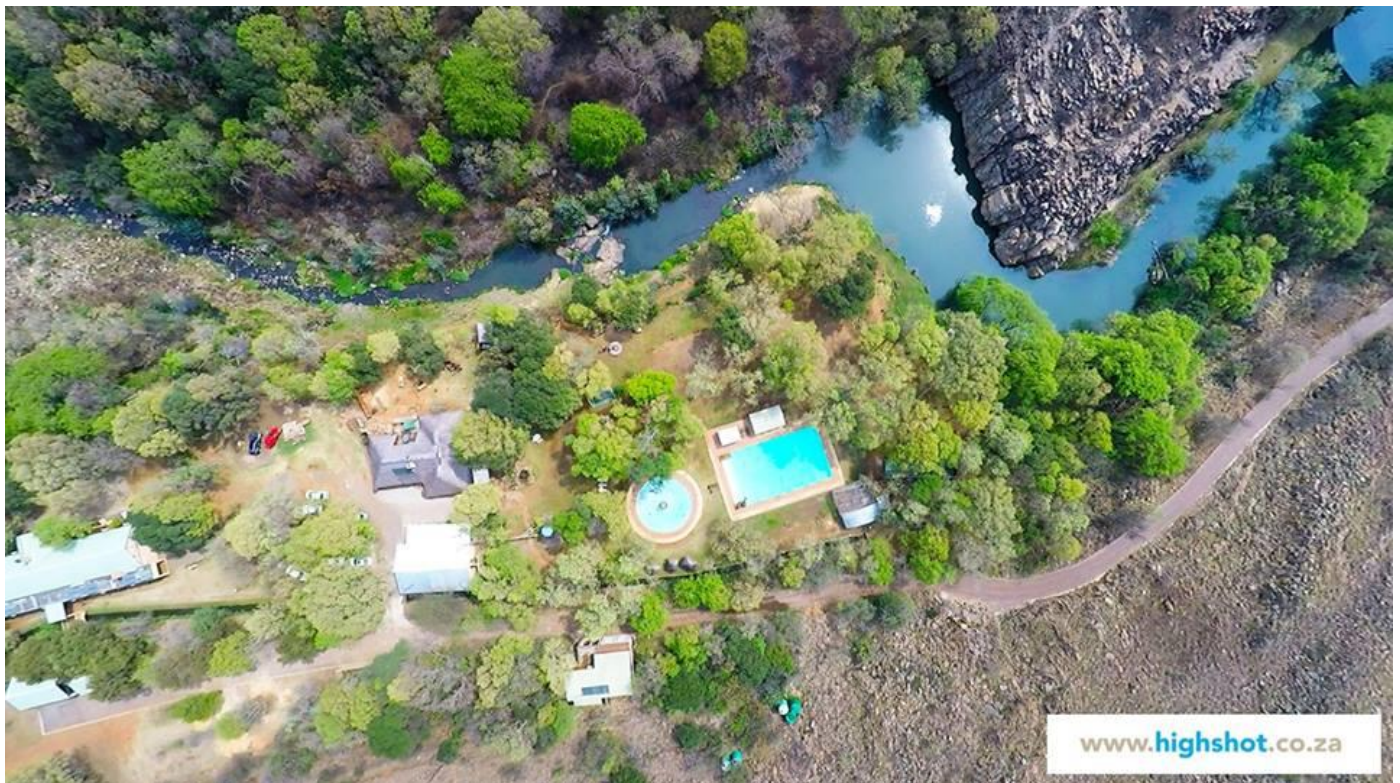
Reg. No. 2000 / 00448 / 07

P O Box 288, Magaliesburg, 1791

Tel: 082 900 7107 Fax: 086 669 5965

Vat No: 4370182190

# Welcome to Hornbill Lodge.



**The management and staff at Hornbill Lodge wish you a pleasant stay.**



Open with QR Scanner  
Download from Android Play store

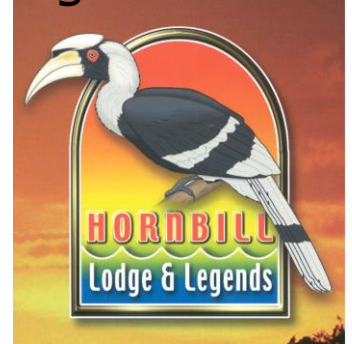
Review us on



All units are fully serviced. Should you have any problems please contact the Manager on 082 900 7107.

## **Hornbill Lodge**

### **GREEN COMMITMENT**



We do not inherit the earth from our ancestors; we borrow it from our children.

We try to keep the entire property botanically endemically indigenous as far as the "alien invader" plants allow, and have many magnificent specimen trees of Acacia, Africana, Stinkwoods, Riverbush Willows, Kiepersols and many other smaller species of shrubs and plants.





**HORNBILL LODGE remains committed to reducing waste and our carbon footprint while maintaining the high level of service and comfort our guests know to expect. Through our continual efforts, and with YOUR help, we can continue to improve. We obviously are wild about nature and the outdoors and we are proud to be a company that participates in environmental conservation.**





## **THE TOP THINGS WE HAVE DONE TO "GO GREEN" ARE:**

- Majority of light bulbs are "energy smart LED globes"
- Day & night electric eyes and time switches for lodge and garden lighting.
- Lights **PLEASE** turn them off when you leave the room. 75% of the energy in a hotel room is used when the bathroom lights are left on for more than 2 hours - mostly when it is unoccupied.
- The rooms all have temperature control and can be set on warm and cold. Air conditioner / Heater – **Keep the thermostat on 23\*c ONLY CHANGE THE MODE TO HEAT OR COOL.** Lowering it by just one degree can reduce heating energy costs by about four percent. Use ceiling fans in the summer AND winter. By reversing the direction of the blades, warm air is pushed down, helping to keep rooms warm in winter.
- We started replacing older televisions with more energy efficient flat-screen TV's DSTV there are nineteen channels available, if it says scrambled it is not available. Should you require any assistance please contact reception.
- We've installed **SunTank** solar geysers on the roof of the Lodge, restaurant and Cottage. SunTank assumes the leadership role in ensuring the rights of South Africans to benefit from the country's renewable energy sources, and in particularly solar energy that is so abundant in our land.  
<http://www.suntank.co.za> **Our Solar Geysers:** Please note that **ALL** geysers are solar and only uses electricity when there is no sun, Hornbill lodge water supply is from a borehole and gets tested on a regular basis like any other water supply. We make use of a low pressure water system and therefore it takes a moment before your water becomes hot, all geysers are set at 60 degrees and therefore will not be boiling hot. The timers are set to provide hot water between **8.00 and 10 .00** am and **17.00 and 19.00** in the evening. We can however manually turn on the thermostat, should this be required please speak to **Cobie 082 900 7107**.





- Installing low-flow shower heads that conserve water.
- Water efficient toilets using only 1L per flush
- **Biobox** <http://www.biobox.co.za> supplied and installed our Sewage Treatment Plant to receive and treat the wastewater generated from this facility. The wastewater then get recycled and irrigated to the green spaces surrounding the facility. There is no wastage of water at all. By recovering, treating and recycling our waste water, we protect our environment. For example, the quality of the groundwater, including the groundwater that we depend on if our water supply comes from a borehole. More and more, local authorities are prohibiting the use of septic tanks, because of the inevitable risks of groundwater pollution. Once polluted, groundwater requires a similar level of treatment as does surface water.



- Use as many refillable consumables as possible
- Recycle worn bath towel and linens converting them in to cleaning rags
- Donating used cooking oil to a bio fuel co-operative.
- Use of environmentally friendly products
- Recycling paper in our business office.
- We are currently installing extra **clothes lines** to REDUCE the amount of dryers we need





**AS OUR GUEST, YOU CAN MAKE AN IMPACK BY TURNING OFF  
THE LIGHTS, TELEVISION, AIR CONDITIONING / HEATER  
WHEN YOU DO NOT NEED IT.**

**We appreciate your assistance in helping us deliver a Green  
footprint.**





## **POWER FAILURES @ HORNBILL**

Most power outages will be over almost as soon as they begin, **BUT** some can last up to 30min - 8 hours in Magaliesburg. The lights will go out, and **all** electrically powered equipment, incl. the WATER PUMP, will cease to operate. When the power does fail and the lights go out leaving you in pitch black darkness, **do not** jump up immediately to find your flash lights. Take a minute or two to let your eyes adjust to the darkness before moving. You'll be surprised how much better you can see and you won't be as likely to hurt yourself by walking into a table, wall, door, etc.

**People with disabilities or others requiring assistance please phone  
082 900 7107**

Reducing our carbon footprint is an iterative process; as conditions change, we will add improvements as we can and maintain the excellent level of service for you, our guest, which we can be proud of. We thank you for your help and participation in these efforts.

**In the event of a power failure you will find candles and  
matches in the cupboard in your room. DO NOT leave candles  
unattended.  
Candle Safety Rules**

- **Always keep a burning candle within sight. Extinguish all candles when leaving a room or before going to sleep.**
- **Never burn a candle on or near anything that can catch fire. Place candles away from drapes, bedding, carpets, books, paper, flammable decorations, etc.**
- **Keep candles out of the reach of children and pets.**
- **Keep burning candles away from drafts & air currents. This will help prevent rapid, uneven burning, and avoid flame flare-ups and sooting.**
- **Drafts can also blow lightweight curtains or papers into the flame where they could catch fire.**
- **Extinguish the flame if it comes too close to the holder or container.**
- **Never touch or move a burning candle when the wax is liquid.**

**PLEASE MAKE SURE candles are completely  
extinguished and the wick is no longer glowing  
before leaving the room.**



## **SAFETY AND SUPERVISION**

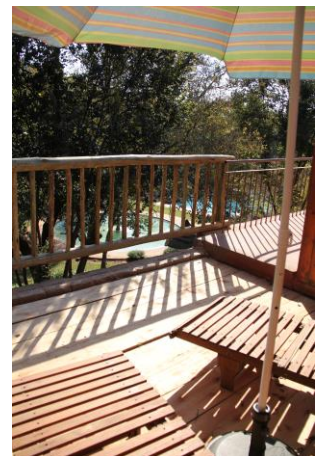




**Children are more than welcome at our family friendly Lodge BUT ALL PARENTS ARE RESPONSIBLE FOR THE CONDUCT, SAFETY AND SUPERVISION OF THEIR CHILDREN.**

It is understood that members, who bring to the lodge minors, defined as persons aged 17 or younger, assume full responsibility for any injury, including death, such minors may suffer while on the lodge property, including, but not by way of limitation, in connection with use of the pool. Neither Hornbill Lodge, nor its director, officers or agents shall have any liability for any such injuries, even if caused by the negligence of Hornbill Lodge or its director, officers or agents.

**OUR NEW 4 BEDROOM SELF CATERING COTTAGE**





## **Kindly check your inventory, sign and hand back to reception.**

*The 2<sup>nd</sup> story rooms all have temperature control and can be set on warm and cold. TV services: - DSTV there are sixteen channels available, if it says scrambled it is not available. Should you require any assistance please contact reception.*

### **Smoking**

***The Restaurant and All Rooms are Non- Smoking areas. Should any one disregard this, please report to the manager immediately. Please be extra careful with fires, especially in the winter months. This includes cigarette butts that must be disposed in ash trays or bins provided.***



## **SAFETY GUIDELINES & GENERAL RULES**

**For your maximum safety and enjoyment while visiting our Lodge, please keep the following guidelines in mind.**

- Proper swim attire is required.
- Diaper wearing guests are asked to wear a protective swim diaper.
- Parents: take children to the restroom often. Polluting pools causes an unhealthy condition.

- **Thunder/Lighting:** Water must be cleared of all swimmers at the first clap of thunder or lightning, or any other dangerous weather condition. The pool must remain cleared for 30 minutes after the last clap of thunder, 45 minutes for lightening.
- Please DO NOT use your room towels at the swimming pool. All guests should bring and use their own towel for the swimming pool, if not towels are provided for your convenience @ reception at a small cost.
- Hornbill Lodge is not responsible for items lost, damaged or stolen.
- **Smoking Policy** - If you smoke in the guest room's your credit card will be charged R200.00. (A cleaning fee to wash the carpets) Smoking is not permitted in any of the lodge's rooms or public lounge or restaurant area.
- Please DO NOT exceed the speed limit of **10** kilometers per hour on or about the Property.
- Avoid littering at all times;
- Ensure that proper care is taken of all keys and a charge will be levied for any lost key (or key which is not duly returned);
- Ensure the maintenance of good and orderly conduct for purposes of good neighborliness.
- Avoid using or abusing alcohol in a manner as causes any nuisance to the other occupiers, staff and the like.
- Only you know your physical conditions or limitations. If you suspect your health could be at risk for any reason or you could aggravate a pre-existing condition of any kind, DO NOT PARTICIPATE !





## **ROCK POOL**





**Even if one person jumps safely, it could still be perilous. Anyone jumping into the Rock Pool does so at their own risk.**

However if you are "jumping" please read the following guidelines:-

Look before you leap or dive into the rock pool, underwater logs or big rocks are all dangerous when you are diving into lakes or swimming holes. Diving head first into a rock pool can cause serious injury. Always check the area and jump feet first. Check the area each time before you enter the pool or lake, as swimming conditions or surroundings may change. You may not be able to see underwater logs and objects.

Do not go beyond your abilities

When you go in the water, swim only where you feel comfortable. Do not jump higher or deeper than you can handle.

Never swim alone. Use the "buddy system". Make sure you watch out for each other.

Play carefully - Wrestling and tumbling in a pool or lake can be very dangerous. Hitting your head against pool walls or floors, or rocks in lakes, can knock you unconscious. If you do not get help, you can drown very quickly.

Do not drink - Injuries involving alcohol are a common problem at all watering holes. Alcohol can make accidents worse because it slows your reflexes and makes you clumsy. If you are in or around the water, do not drink alcohol.





## **SNAKES**

**(Cobras, Mambas, Adders) mostly found on the mountain. Ask at reception for snake book to identify snakes on premises.**

**N.B. most snakes are afraid of Humans, but don't touch.**



- Keep a safe distance from it.
- Don't try to attack it or kill it. If you try to attack, it may harm you in self defense.
- Maintain a safe distance, keep an eye on it, watch its movement and ask someone else to call management.
- Let the snake escape by his own, don't try to surround it. Let it have a window or safe passage.
- There are many species of snakes in Magaliesburg but only 4 of them are poisonous. Snakes always want to escape from human so let them go away. Never ever try to harm it, attack it or kill it.

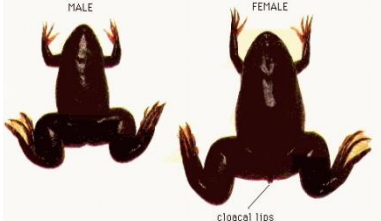











# CHECKLIST OF REPTILES AND AMPHIBIANS IN THE MAGALIESBERG

Compiled by N.H.G. Jacobsen, Transvaal Division of Nature Conservation

## Frogs

### Scientific Name

### Common name

<p><b><u>Xenopus laevis</u></b></p> 	<p><b><u>Common platanna</u></b></p> 
<p><b><u>Bufo gutturalis</u></b></p> 	<p><b><u>Guttural toad</u></b></p> 
<p><b><u>Bufo garmani</u></b></p> 	<p><b><u>Olive toad</u></b></p> 
<p><b><u>Bufo rangeri</u></b></p> 	<p><b><u>Raucous toad</u></b></p> 
<p><b><u>Schismaderma careens</u></b></p> 	<p><b><u>Red toad</u></b></p> 
<p><b><u>Bufo fenoulheti</u></b></p> 	<p><b><u>Pygmy toad</u></b></p> 



**Breviceps adpersus****Red List of Threatened Species****Bushveld rainfrog****Red List of Threatened Species****Tomopterna cryptotis****Tremolo sand frog****Tomopterna natalensis****Natal sand frog****Rana angolensis****Common river frog****Strongylopus fasciata****Striped stream frog**

**Ptychadena anchietae****Plain grass frog****Phrynobatrachus natalensis****Snoring puddle frog****Cacosternum boettgeri****Common caco****Kassina senegalensis****Bubbling Kassina**



## Tortoises and turtles

*Geochelone pardalis*



Leopard tortoise



*Kinixys belliana*



Savannah hinged tortoise









*Pelamedusa subrufa*



Cape terrapin



## Lizards

<p>Lygodactylus capensis</p> 	<p>Common dwarf gecko</p> 
<p>Pachydactylus c. capensis</p> 	<p>Cape thick-toed gecko</p> 
Pachydactylus c. affinis	Transvaal thick-toed gecko
Pachydactylus bibronii	Bibron's gecko
Agama atricollis	Tree agama
Agama atra	Rock agama
Agama aculeata	Spiny agama
Chamaeleo dilepis	Flap-neck chameleon
Mabuya capensis	Cape skink
Mabuya varia	Variable skink
Mabuya striata punctatissimus	Striped skink
Lygosoma sundevallii	Sundevalls' writhing skink
Panapsis wahlbergii	Wahlberg's snake-eyed skink
Nucras taeniolata	Ornate sandveld lizard
Pedioplonis lineo-ocellata	Ocellated sand lizard
Ichnotropus capensis	Cape rough-scaled sand lizard
Cordylus vittifer	Transvaal girdled lizard
Gerrhosaurus flavigularis	Yellow-throated plated lizard
<p><b><u>Varanus exanthematicus albicularis</u></b></p> 	<p><b><u>Rock leguaan</u></b></p> 







**Varanus niloticus****Water lequaan****Amphisbaenians**

Monopeltis capensis



Cape wedge-snouted amphisbaenian

**Snakes**

Typhlops bibronii	Bibron's blind snake
Typhlops lalandei	Lalande's blind snake
Leptotyphlops conjunctus	Lesser thread snake
Leptotyphlops scutifrons	Peter's thread snake
Leptotyphlops distanti	Transvaal thread snake
Python sebae natalensis	Southern African python
 	 

Lycodonomorphus rufulus



Brown water snake



Lamprophis aurora



Aurora snake



Lamprophis fuliginosus



Brown house snake



Lycophidion capense

Cape wolf snake

Pseudaspis cana

Mole snake

Psammophylax rhombeatus

Spotted skaapsteker

Psammophylax tritaeniatus

Striped skaapsteker

Psammophis leightoni trinasalis

Fork-marked sand snake

Psammophis sibilans

Short-snouted sand snake

Psammophis angolensis

Pygmy sand snake



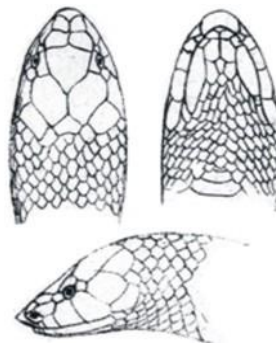


*Causus rhombeatus*

Common night adder

*Atractaspis bibronii*

Southern stiletto snake

*Atractaspis duerdeni*

Duerden's stiletto snake

*Prosymna sundevalli sundevalli*

Southern lined shovel-snout

*Philothamnus hoplogaster*

Green water snake



*Philothamnus natalensis*

Natal green snake

*Philothamnus semivariegatus*

Spotted bush snake

*Crotaphopeltius hotamboeia*

Herald snake

*Telescopus semiannulatus*

Eastern tiger snake





*Dasypeltis scabra*

Common egg-eater

*Elapsoidea sundevallii*

Highveld garter snake

*Bitis caudalis*

Horned adder





## Extremely Venomous

### **COMMON or AFRICAN PUFF-ADDER / GEWONE POFADDER**

#### ***Bitis arietans arietans***

**Description:** Head very broad behind and subtriangular in shape; nostrils directed vertically upwards; scales all strongly keeled and 29 to 41 rows at midbody; ventrals large, as broad as body and from 124 to 147 in number; subcaudals 16 to 37, usually 25 or more in males and not exceeding 23 in females. The ground colour above varies from straw yellow to light or orange brown, with more or less regular, backwardly directed, chevron-like dark brown to black bars or bands over the back and tail, or sometimes the colours are reversed, i.e. basal colour dark, with paler markings; a large, well-marked, dark blotch on crown of head and a side of the head, the first below and the second behind the eye; underparts yellowish white, uniform or sometimes with scattered dark spots; in general, specimens from the dry western half of the country are paler, while those from the moister eastern regions are darker. Colouring is brightest just after sloughing of the skin, but tends to become very dull just before. Eye varies from a golden to a silvery grey. Average length of adults about 90cm, but may exceptionally attain as much as 120cm; tail short, its length being contained in total length 6 to 9 times in males and 11 1/4 to 17 times in females.

**Distribution:** A cosmopolitan species, found throughout Africa and into Arabia, excluding only the rain-forest and extreme desert regions.

**Remarks:** The Puff-Adder is one of the most common and widespread of all poisonous snakes, occurring throughout the savannah regions of Africa, and is probably responsible for more serious cases of snakebite than any other species. Owing to its normal sluggishness and reliance on its cryptic markings to escape notice, it seldom attempts to move away when disturbed (as is the normal habit of most other snakes) and thus presents a constant hazard to the unwary, who may unwittingly approach it too closely. Normally the only warning given of its presence is the characteristic loud hiss, which is often heard too late by the victim to take evasive action. In spite of its heavy build and deceptively sluggish appearance, it can strike with amazing rapidity from a coiled up position; in order to obtain greater impetus for its forward strike, the head and forepart of the body are first drawn well back, and it is this initial slower backward movement that is usually noted and has led to the erroneous belief that it can strike backwards. Unlike the elapids, it does not normally hold on to its prey after biting, but immediately withdraws to the ready position for another strike if necessary. It is essentially a terrestrial snake and, probably because of its thick heavy build, progresses mainly in slow rectilinear or "caterpillarlike" fashion, and only resorts to the more usual serpentine wriggle when really agitated. Like most other snakes, it is quite at home in water, on the surface of which it swims with ease in a gentle, slow serpentine motion, or in which it will rest for long periods with only the head exposed. When available, toads appear to form its preferred diet, but rodents are also freely taken. On an average 20 to 40 live young are produced at a time, although exceptional broods of up to 70 or 80 have been occasionally recorded. At birth the young snakes wriggle free of their egg-cases within a few minutes as fully equipped miniatures of their parents. As there is usually a certain amount of blood ect. extruded at the same time, this has led to the generally accepted belief that the young eat their way out of the mother's body. The venom is mainly haemolytic in its action and, although slower in its action than the mainly neurotoxic venom of the elapids, it can nevertheless prove just as fatal, unless the proper remedial action is immediately taken. The fangs are relatively very long (up to 2cm in large specimens), curved and needle-sharp, with the result that the venom can be injected deep into the flesh of the victim, where its effect is likely to be greatest.



Dr. V.F. M. FitzSimons



## **BOOMSLANG or COMMON AFRICAN TREE SNAKE**

### ***Dispholidus typus***

**Description:** Scales on body very strongly keeled, arranged in diagonal rows of which there are usually 19 at midbody; ventrals 164 to 201 and subcaudals 87 to 131, there being no marked differentiation between the sexes. The variation in colour found in this species is probably greater than that found in any other species and is as follows: Young specimens are usually ash grey to brown above, with numerous darker and lighter spots, the latter often being bluish in colour; underparts yellowish to pinkish grey and speckled in varying degree with different shades of brown; upper lip yellow. Adults are found in number of colour variations, of which the four following are the most marked: (1) Light to dark brown above, uniform or with darker vertebral stripe, or sides greyish and mottled with brown or with scattered bluish white spots; underparts greenish white to yellowish or greyish brown, uniform or with darker infusions. (2) Bright leaf to olive green above, uniform or with scales all narrowly edged with black and often black spots on the head; underparts light to yellowish green, uniform or with a narrow black edging to ventrals and subcaudals. (3) Mainly black above, but with each scale bearing a yellowish or greenish central spot and head spotted with black; underparts yellowish and all scales heavily margined with black. (4) Uniformly black above and greyish black below. Depending on the general body colour, the eye may be grey, brown or emerald green. Brown specimens are predominantly females, while all others are usually males. Average length of adults from 140 to 150cm, but records of 180cm or a little over are not uncommon; length of tail  $31\frac{1}{3}$  to  $43\frac{3}{4}$  times into total length.

**Distribution:** Throughout tropical Africa (south of the Sahara) and extending southwards to the southernmost tip of the continent, but absent from the drier western parts of South Africa, such as the Karoo, northwest Cape, Little and Great Namaqualand.

**Remarks:** This arboreal species is mainly confined to open savannah, bush country and open forest, where its slender build and excellent camouflage enables it to glide practically unseen through its leafy habitat. It is normally a timid snake and will make off at the slightest alarm, but when cornered will distend the throat to a marked degree and strike out vigorously.

Unlike most of our other back-fanged snakes, its venom is lethal and contains certain elements which break down the coagulant factor in the victim's blood to cause extensive and uncontrollable bleeding, accompanied by extensive lesions under the skin. As it has been found that the ordinary polyvalent anti-venene is ineffective in combating severe bites of this snake, a specific serum has now been developed. Its preferred diet appears to be chameleons and other tree living lizards, although small birds, mice and frogs are also readily taken. The prey is not constricted, but is firmly held until immobilised by the venom, when it is swallowed at leisure. It is an inveterate robber of bird's nests and often mobbed by birds in their efforts to drive it away. Usually from 10 to 14 eggs are laid at a time during late spring or early summer; the young hatch out from 4 to 7 months later and measure a little over 30cm at birth. Owing to a general similarity in habitat and colouring, these snakes are often mistaken for mambas, from which, however, they can be readily distinguished by their very short head, large eye and keeled scaling. Dr. V.F.M. FitzSimons





## **THE BIRD SNAKE**

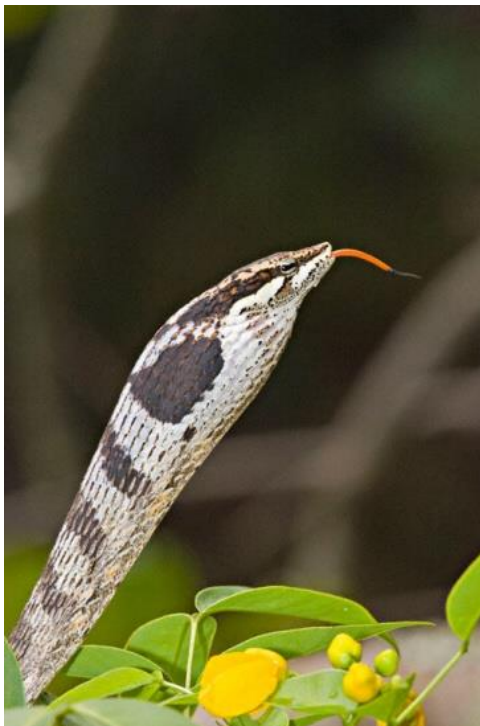
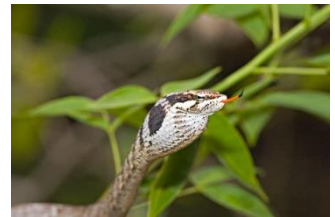
### **(*Thelotornis capensis*)**

The Bird Snake is also known as Southern Bird Snake or Twig Snake. The snake shown here was found in a tree in the Blyde River Canyon Preserve, Mpumalanga Province, South Africa, in January, 2006. The images were shot with a Canon EOS 1D Mark II and EF 300mm F/4 L IS lens and 1.4X extender. This snake was remarkably camouflaged as it remained motionless in a tree along a stream. When the snake became concerned by my presence it swelled its neck in a threat display as shown in a number of the images below. This is a rear-fanged, venomous reptile so we did not attempt to handle it. Its diet consists of lizards, frogs, and small birds.

One of the weirdest days in my life: three snake encounters within a few hours.

Arriving at Marloth, Celeste and me found this young Vine Snake. I later found out (from a credible expert) that the bumps on its body is probably from it raiding the nest of a bird or mouse, eating all the young, and then the food gets queued up in the stomach, giving the rippling effect.

Even though this snake has deadly haemotoxic venom, I wasn't scared of it because it was really small. In any case, human fatalities and bites from this snake are very rare. However, if you do get bitten, there is at present no antivenom available for this snake.



## **MOZAMBIQUE SPITTING COBRA / MOSAMBIEK SPOEGSLANG**

### ***Naja mossambica mossambica***

**Description:** Sixth upper labial not the largest and separated from the postoculars; third upper labial deepest and the only entering the orbit; usually three postoculars; 9 to 15 (average 11,9) scales bordering the parietals behind (7 to 12, average 8,9 in *N.n.nigricollis*); Frontal usually 11/2 times as long as broad (only slightly longer than broad in *N.n.nigricollis*); scales in 23 or 25 rows across midbody; ventrals 177 to 250; subcaudals 52 to 69. Slate to olive or tawny brown above; with some or all the scales back-edged and interstitial skin black; underparts salmon pink to yellowish with black bars across neck and ventrals usually speckled or edged with brown to blackish. Juveniles may have pink or lemon yellow bars across throat. A small cobra rarely exceeding 150cm in length.

**Distribution:** From south-eastern Tanzania to Natal and westwards into north-eastern Namibia.

**Remarks:** Probably one of the most common cobras, but not so frequently seen, as adults apparently prefer being abroad at night. Young and immature specimens, however, are more diurnal and may be encountered at any time of the day. Unlike the Egyptian Cobra, which is also a savannah species, it appears to prefer localities near water, to which it readily takes when disturbed. It can be classed as one of our most dangerous snakes, and can not only inflict a fatal bite, but can eject or 'spit' its venom like the Rinkhals. When confronted, it raises practically two thirds of its body and spreads its long narrow hood in spectacular fashion in readiness to 'spit' its venom at its enemy as soon as the latter comes within range. As the mechanism for 'spitting' is not so highly perfected as in the Rinkhals, it has to lean well back in order to ensure that the venom is directed both upwards and forwards. Unlike the Rinkhals, however, it can also eject its venom with the mouth only slightly open; this is made possible by the lifting of the upper lips in the form of a 'snarl' and so exposing the orifice of the lower, front edge of the fangs; this ability to raise the lips also enables this snake to spit from almost any position, thus making it all the more dangerous to the unwary, who may expect it to spit only from the reared-up position. The effective range to which the venom can be ejected is 1,5 to 2m, but in large specimens has been recorded as close on 3m, and is invariably directed at the eyes causing instance blindness, which can become permanent unless immediate remedial measures are taken, as mentioned in the case of the Rinkhals. Like the latter, it seldom attempts an actual bite and also shams death. Commonly known as the m'Fesi in Natal and Zululand.

Dr. V.F.M. FitzSimons





## **EGYPTIAN COBRA / SNOUTED COBRA**

### ***Naja haje***

**Description:** Yellowish, dark brown, or black uniform top with brown crossbands. Its head is sometimes black.

**Characteristics:** It is extremely dangerous. It is responsible for many human deaths. Once aroused or threatened, it will attack and continue the attack until it feels an escape is possible. Its venom is neurotoxic and much stronger than the common cobra. Its venom causes paralysis and death due to respiratory failure.

**Habitat:** Cultivated farmlands, open fields, and arid countrysides. It is often seen around homes searching for rodents.

**Length:** Average 1.5 meters, maximum 2..



## **RINKHALS**

### ***Hemachatus haemachatus***

This species is classified as dangerous and is predominantly Neurotoxic. They are predominantly nocturnal but often encountered basking during the day. It is not typical to other cobra's in that it is viviparous having upto 63 live young, but normally around 30, The preferred habitat is savannah especially near to water where there are frogs, which is it's preferred diet. However for those who have kept them in captivity they are not overly fussy what they eat. **Description:** A dull grey, grey brown or black species that have white bars on the neck. This can be between 1 and 3 bars, but usually 2. They have keeled scales, which along with being ovoviviparous are the predominant features that do not get them classified as true cobras. They also have light bars on dark ventral scales, whereas the cobras have dark bars on lighter scales. The ventral scales of this species are normally dark grey to light grey, but white in juveniles. Sub-adults have black speckling which starts to the centre of the ventral scales. Banded phases do occur but along the coastlines. An albino specimen has been caught within Gauteng. Their main means of defence is hooding and then spitting their venom. They are only able to spit from this hooded position. The venom range is usually around twice the body length and in adults this may be 2-3m. Should this defence fail they sham death and convincingly so. The tongue will often hang out of a twisted inverted upper body and lying very limp. If picked up it may or may not bite. Bites are not common but can be potentially lethal. The average yield is around 80-120mg and approximately 40-50mg would probably be fatal. Antivenin is extremely effective in treatment.



## **Meet our Hornbill “doggie pack” that is responsible for keeping our living areas snake and baboon free:-**

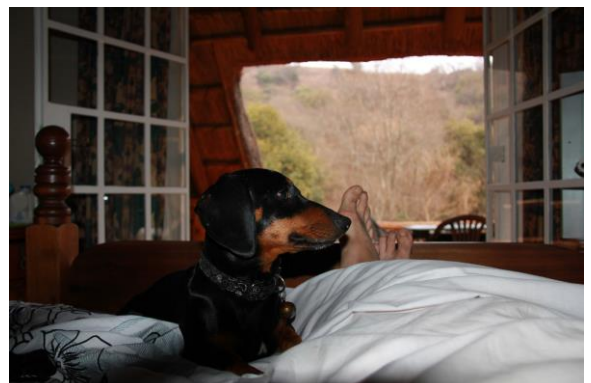
### **Pets**

Well-behaved dogs are welcome, but must be kept on leads at all times. Please be responsible for cleaning up after your pets. Acceptable breeds only accepted onsite - please contact us for more information. **Please note**, we have 9 dogs that are resident at Hornbill. These dogs are working animals, they are friendly but please ensure children are supervised if stroking the dogs. We welcome well-behaved dogs. We do reserve the right to charge extra for cleaning and repair costs if your dog damages our furniture and soft furnishings. Acceptable breeds only accepted onsite - please contact us for more information.

### **Hammy (Jack Russell)**



### **Worsie (Dachshund)**

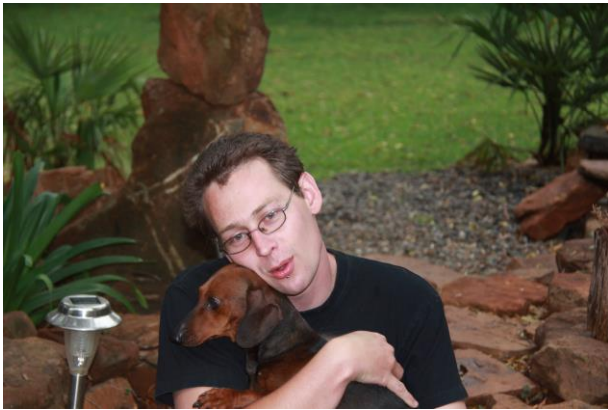




**Sparky lost her leg in an accident on the main road when she was 4 months of age. (Jack Russell)**



**Lina (Dachshund)**



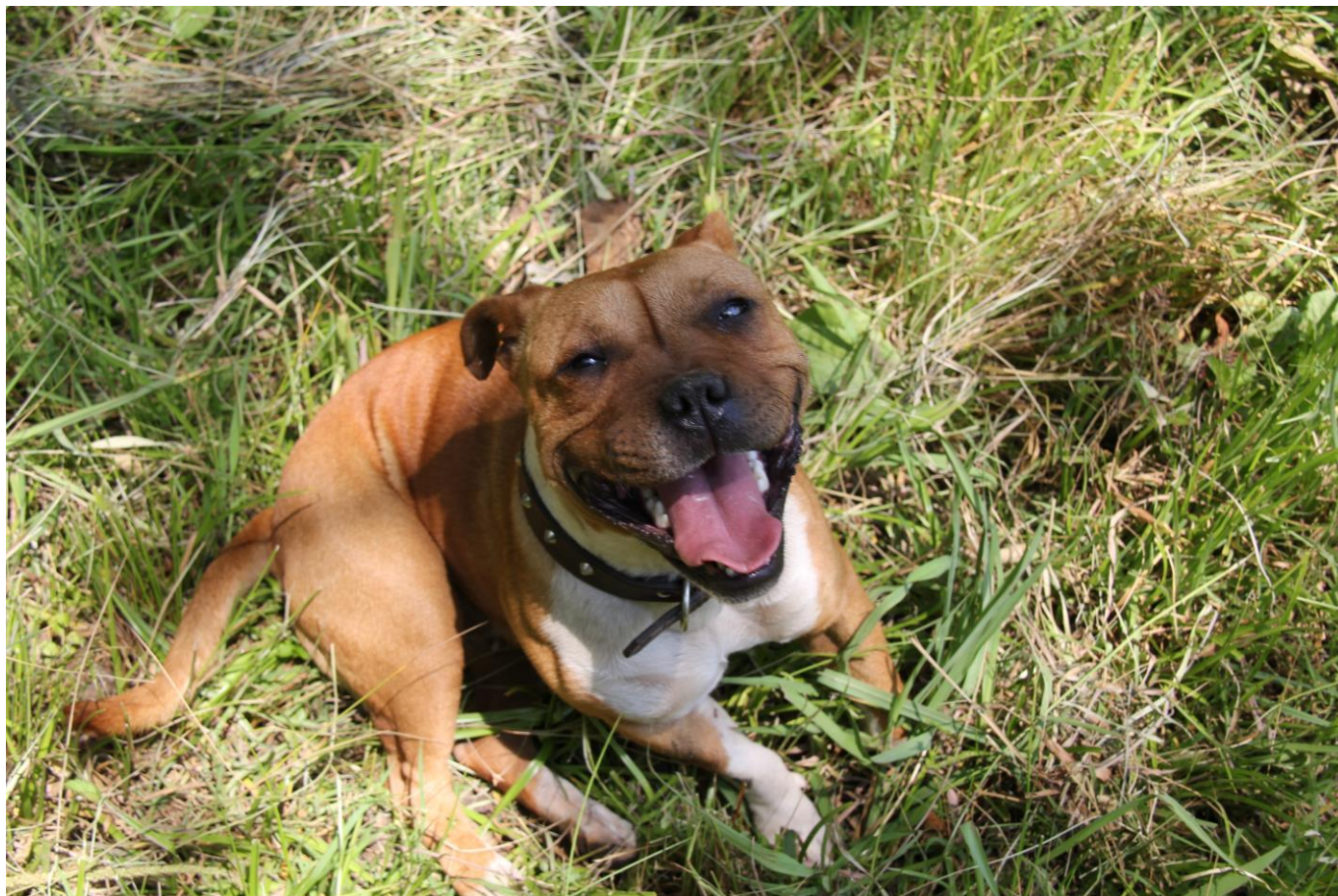
**Stanley (Dachshund)**



**Shekels (Staffordshire Bull Terrier)**

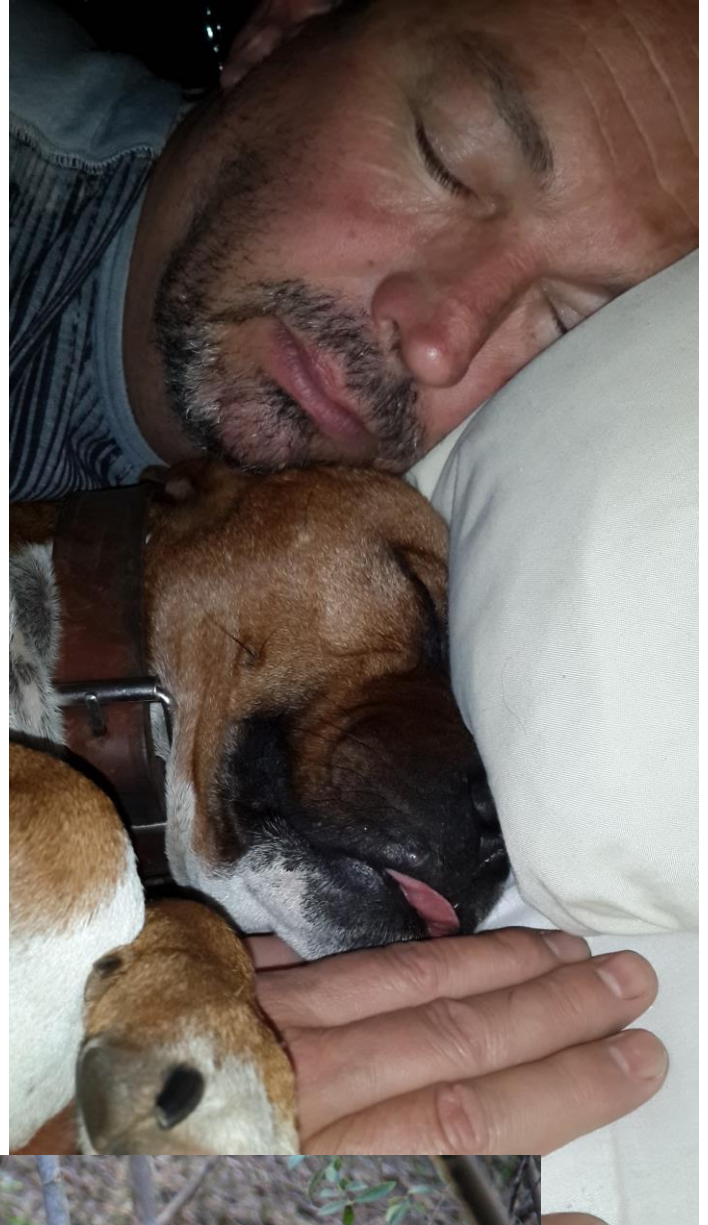








**Dienki-Toy (Staffordshire Bull Terrier)**  
**The mother of Shekels**





**Dorah(pienk) & Savanha(khaki) (Staffordshire Bull Terrier)**  
**Mother & daughter**







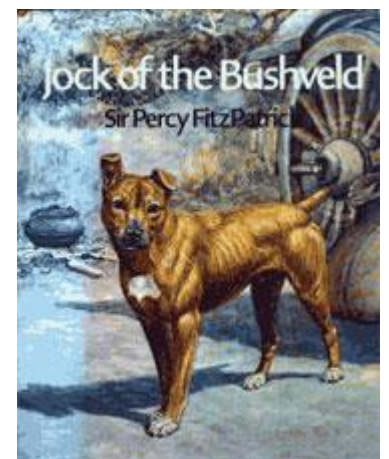
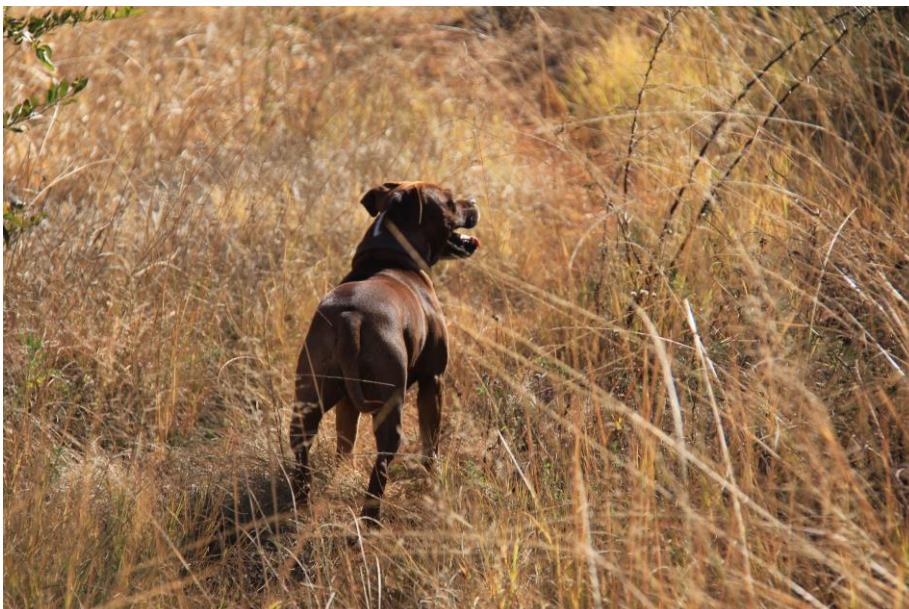
37



### **Jock of the Bushveld**

SA's best loved dog hero !!

'Jock of the Bushveld was a Staffordshire bull terrier' Since Sir Percy Fitzpatrick wrote Jock of the Bushveld, the Staffordshire bull terrier, or simply the Staffie, has been a common household companion in South Africa.







Except for Sparki, all our other dogs are adopted animals from loving homes that unfortunately could not keep them. All previous “mummies and daddies” keeps an eye on their babies through Facebook and WhatsApp and occasionally visit them here at Hornbill Lodge. All our female dogs were spayed except Lina who has Anemia and operating her could be life threatening. Our new babies - Dorah & Savannah still need to be spayed. All our dogs had their rabies and all vaccinations and yearly de-worming. **We have gone to great lengths to treat ticks and fleas on all our animals but our dogs spend a lot of time outside and ticks and fleas tend to be a problem. Please DO NOT LET THE DOGS SLEEP IN YOUR ROOMS. Fleas bites can cause bothersome itching and tick bites are dangerous for humans; they are known to spread disease.**

### **Treat Tick Bites on Humans**

If a tick is found that has already bitten into the skin, remove it promptly using a tweezers. A cloth should be used as a barrier between your skin and the tick if it must be removed with the fingers. Once the tick is grasped, pull straight out. Do not twist the tick. After the tick is removed, place the tick in a container of soapy water or alcohol to dispose of it. Burning the tick or placing it in petroleum jelly is not advised. Wash the site of the tick bite with soap and water. Treat the bite with an antiseptic to prevent infection. Consult your physician if you become ill, making sure to report the tick bites.



## **OTHER FARM ANIMALS**



**Stella – Donkey**



**Ott – potbelly pig**





## **WILD ANIMALS - Small game to look out for at Hornbill Lodge**

### **Food for Thought**

All of Nature is precious; please help us to preserve it for future generations. No plants or other natural material to be removed from the property please. This Lodge is a part of a very delicate biosphere.

Hornbill Lodge is situated on approximately 10 hectares of probably the most beautiful property in Magaliesburg. There is a path cut all along the riverbanks and you are most welcome to explore and enjoy a walk along the riverbanks. Adjacent to our property next to our entrance is the Mountain of Faith. You are most welcome to extend your walk onto a beautiful path cut all round and over the mountain. For the more adventurous we can arrange a walk onto the mountains on Parnassus farm. The farm is approximately 39 hectares and takes you into "wild" territory. Please arrange and book this particular walk.

Please note Hornbill Lodge is a nature Reserve and you will encounter some wild animals like baboons, snakes, mongoose, otters and of course a variety of incredible birds, including the Hornbill. All walks are at your own risk and the resort cannot be held liable for any events or mishaps. Please stay away from the baboons, which are of course the big Magaliesburg Adoonse. They usually cross our property from 6 to 8 in the mornings. PLEASE DO NOT ATTEMPT TO FEED THEM. It is really a pleasure to watch them in their natural habitat. Adults must at all times accompany children. Please note that the riverbanks are unprotected and the river at some places is very deep, and the river banks quite high. Children falling down into the river are a great cause of concern. Hornbill Lodge is situated on 1.5 km river front. Our guest rooms open onto the riverine forest. 95 % of all plants are endemically indigenous and we intend to increase this.



## Please do not feed any animals – “a fed baboon is a dead baboon”



### The Chacma Baboon

#### Appearance

The Chacma Baboon is a large primate with a dog-like face and large, prominent canines. A mature male measures 1.5 m from head to tail and weighs up to 33 kg, whereas the more slender female measures 1.1 m and has a mass of about 15 kg.

#### Diet

Omnivorous, under natural conditions they feed on wild fruits, seeds and insects, even scorpions, and on occasion even the flesh of small mammals and birds. Because troops are inclined to raid commercial crops, baboons are not popular with maize and fruit farmers.

#### Breeding

Baboons do not have a definite breeding season and are sexually active throughout the year. Gestation period is around 140 days, after which a single young is born. Chacma baboons are preyed upon by Leopard and Cheetah.

#### Behavior

Baboons can be very aggressive. It is a known fact that they would viciously counter-attack their predators when threatened. Troops are 50 to 100 strong, and have a well-developed and complex social structure.

#### Where they are found

Baboons inhabit woodlands, semi-deserts and sub alpine meadows along the Drakensberg. The Chacma baboon is replaced in the north by its close relative, the yellow baboon. They are widely distributed throughout Southern Africa and in countries beyond.

- ***Baboons and monkeys:*** large troops cross the property in the early morning to cross the river to feed on the mountainside.
- ***Jackals***



- **Wild cats**
- **Snakes** (cobras, mambas, adders) mostly found on the mountain. (Ask at reception for snake book to identify snakes on premises. N.B. most snakes are afraid of Humans, but don't touch.)
- **Monitor lizards:** We have spotted two Water Monitors, one at the parking area of the lodge and one at the rock pool.
- **Guinea Fowl**
- **Owls:** two large Barn Owls can be spotted at night near the front gate.
- **Birds:** About 170 species of birds have been sited in this area. The Grey Hornbill breeds in the riverine forest behind the Lodge and the young are often seen hopping around the property and pecking at their reflections in the windows!



## **Magaliesberg / Magaliesburg**



The **Magaliesberg** is a mountain range extending from Pretoria in the north of the Gauteng Province to a point south of Pilanesberg, in the North West Province, South Africa (see also Pilanesberg National Park). The highest point of the Magaliesberg is reached at Nooitgedacht (1 852 meters) 🌐 25.8583° S 27.530° E. **Situation, Geographical Extent & Geology** Stretching 125 kilometers from east to west and rising an average of 330 meters above the surrounding plains, the Magaliesberg separates the lower-lying, hotter bushveld to the north from the cooler Highveld to the south, extending in an east-west arc between Rustenburg and Pretoria in the province of Gauteng.

The ridgeline has a small number of main summits along its crest, but none of these require mountaineering skill to ascend. The crest of the ridge is only 450m above the surrounding Highveld plain, which is itself about 1200m above sea level. The highest point (1780m) is found 35Km south east of Rustenburg in the area known as Nooitgedacht. It forms the most southerly range of the band of mountains lying between the Limpopo and Olifants rivers, and lies along the southern limit of the Bushveld Igneous Complex.

Geologically, the Magaliesberg is typical of the ranges found in this area of South Africa. Its quartzite's bear the mark of a turbulent past, when layers of sand were deposited on the edges of a large inland lake. The rocks of the Magaliesberg are amongst the oldest exposed volcanic rocks in the country. Farmers privately own most of the land along the length of the range, and public access is obtained via



this land at a limited number of points. The Magaliesberg Section of the Mountain Club of South Africa owns a number of small areas and access points and is very involved in the conservation of this wilderness area. Access is also gained via a number of small hotels and public resorts scattered along the range. The largest sections of land open to the public are the Rustenberg Nature Reserve and the Mountain Sanctuary Park. Rising 330 m above the surrounding plains, the Magaliesburg is the most conspicuous of the three parallel quartzite ridges dominating the landscape north of Johannesburg. With a length of about 170 km it stretches in an arc from just south of Rustenburg to Pretoria and then eastwards to the Bronkhorst Dam, forming a natural divide between the highveld and the bushveld. The small village of Magaliesberg is situated some 80 km from Johannesburg and Pretoria and is nestled at the foot of the Magaliesburg range of mountains. Originally named the Cashan Mountains, the Voortrekkers named the range after Mogale, a Tswana chief, and corrupted it to Magaliesburg. Dissected by numerous kloofs with crystal-clear streams, waterfalls and pools, the range is home to over 150 bird species, including three breeding colonies of the Cape vulture and a variety of other raptors, kingfishers, crimsonbreasted shrike, the elusive African finfoot and the Marico flycatcher. Animal's occurring here include leopard, brown hyaena, and mountain reedbuck. Bushbuck, klipspringer and baboon. Although the Magaliesburg is almost entirely private property, most of the range was declared a Natural area in 1977 and a Protected Natural Environment in 1993.

All trips into the Magaliesberg require you to be fully prepared for all eventualities. This means that you will need to carry your own shelter or tent, food, sleeping bag, cooking equipment, and clothing for any weather type or temperature. The weather can change very fast. It is recommended that the minimum party size is three to four persons and that a walking rope is carried.

### **Weather**

Magaliesberg lies in the Gauteng province on the boarder of North West Province is situated in a summer rainfall area, at an altitude of around 1700 meters. Rain occurs mainly as thunderstorms in the late afternoons, sometimes with hail. The storms are typically very localized, and the weather clears soon afterwards. The average daily temperature in January in this area is about 25° C. Due to the altitude of the Magaliesberg there is little or no humidity and the UV factor is extremely high.

Winter temperatures (July) during the day average around 16° C with extremely cold nights and early mornings, temperatures can drop below freezing during these hours. Hornbill Lodge recorded -4° C in July 2007 The average night temperature during winter is around 4° C.

### **Dangers**

Troops of baboon are found in the Magaliesberg. These troops are sometimes large, and such groups should be treated with caution. Interference with their social activity, their feeding, or their young is inadvisable, and hikers should never place

themselves between baboons and their young, or corner these animals, leaving them no escape route. Carnivores such as the Brown Hyena, Black-Backed Jackal, and the Leopard are also found here, but all are very shy, and are thus rarely seen. Vervet monkeys are not dangerous, but offer some degree of nuisance value, having learned to raid rucsacs. The Magaliesberg is home to a number of poisonous snakes. It must be remembered that snakebites are rare, as most snake species will try their best to escape from contact with humans. A particular danger in the Magaliesberg is lightning. Summer storms on the Highveld are often vicious, and particular care needs to be taken in the Magaliesberg during such storms. Avoid high, open grassland areas with few trees. Do not shelter beneath trees or bushes in such areas, and if possible retreat to lower ground before the storm arrives.

### **Flora**

There are just over 120 tree species in the Magaliesberg area, all mostly indigenous, some are however exotic invaders. Of the indigenous trees, a wide variety has traditional medicinal & magical uses. These are worth reading up on. There are also numerous species of wild flower that are situated in the different kloofs and cliff faces, mountain tops & river valleys.

### **Fauna**

Vast and varied communities of mammals, birds, reptile's amphibians, arachnids & invertebrates inhabit the mountain slopes. Some of the larger more common mammals being: Chacma baboon; Vervet monkey; Lesser bush baby; Porcupine; Cape fox; Aardwolf; Leopard; Brown Hyena; Bush buck; Kudu; Mountain Reedbuck; Eland; Gemsbok; Springbok; Burchells Zebra. Some 300 species of birds ranging from Birds of Prey, to scavengers, to grassland birds and forest species, it is nearly impossible to give a brief broad range. The list of wildlife is endless; needless to say that there is a wide diversity found in the Magaliesberg.

### **Brief History**

This Area The Magaliesberg has been an arena for the enactment of a succession of cultures and societies. Humankind has inhabited the Magaliesberg and surrounds for hundreds of thousands of years. In fact, the Sterkfontein caves, 25Km south of the main range hold some of the best known and oldest of hominid fossils. The first "modern" humans to occupy this region were the San or Bushmen anywhere between 25 000 and 10 000 years ago. These people hunted and gathered here until about 1000 years ago, when people demonstrating iron-working capacity migrated in from eastern and central Africa.

The ancestors of today's Tswana speaking people arrived in the Magaliesberg between 1200AD and 1600AD and began the building of the stonewalled structures that dot the southern slopes. Early explorers to the area years later describe the ruins of great towns and even speak of villages in trees. In the early 1820s many Nguni clans began to retreat into the Highveld to escape Zulu expansionism. These groups often clashed bitterly with the Tswana-speaking groups and threw many



cultures into disarray. In 1821, Mzilikazi, one of Shaka's under-chiefs, defied his king and took his impi to the northwest. By 1827, the Ndebele as they become to be known, had all but driven the Tswana out of the Magaliesberg and had claimed the area as their own. Continued Zulu attacks eventually convinced Mzilikazi to take his people across the Limpopo and establish his kingdom in what is now Zimbabwe.

The first Europeans into see the area were three Scotsmen from Grahamstown. McLuckie, Scoon and Hume were hunter-traders and interacted extensively with the Sotho, Tswana and Ndebele. Later the missionary Robert Moffat traveled to the Magaliesberg at the invitation of Mzilikazi. At around 1850, Boer farmers began arriving in the area and Rustenburg was founded in 1852 and this area was to play a significant role in the formation of the Transvaal Boer Republic and the subsequent Anglo-Boer War.

### **Other Things to do**

Activities in the valleys are hiking, camping and rock climbing. Horse riding trails follow paths into the mountains at several points, usually starting from private farms or hotels. Game viewing in wilderness areas is popular, with bird watching being an important sub-discipline. Watersports activities take place at the Buffelspoort and Hartebeespoort Dam nearby, and both hang-gliding and hot air ballooning takes place near by. Historical and archaeological sites abound along the length of the Magaliesberg range. Some of the most important battle sites of the Anglo-Boer War are to be found here. The Pilanesberg Nature Reserve is a little further west, and offers superb game viewing and a high standard of accommodation.

### ***The following activities will be available nearby Hornbill lodge***

Booking can be arranged by **Cobie 082 900 7107**

Horse Riding  
Quad Biking  
Go carting  
Game drives  
Canopy tours  
Off road Cycling  
Massages – Spa Treatments  
Candle dipping

Picnic Baskets  
Braai picnics  
Abseiling ( Min Group of 6 )  
Elephant experience  
Hot air Ballooning  
Riverside Picnics  
Therapeutic Foot Reflexology  
Art galleries

**Bookings Essential, Subject to availability.**





## **Meet "The Family"**

The Lodge is partly owned by Cobie and Muriel Els, who live on the premises with their children and meet and mingle daily with guests. The company has been in existence since 1985 but even longer in the family.

The following is an account (and perhaps a character analysis) of each family member.

### **The Dad**

**Cobie Els Snr.** He is a man in his mid-to-late 40s, dark hair with gray hair on the sides. He almost always wears his "kakies" to work. It is well known, however, throughout the company, that he runs the show, and calls the shots.



### **Mother Superior**

**(Muriel Krogh-Els)**

"Need we say anything else?"



## **Son#1**

**Cobie Els SW** born in 1985 - Cobie SW can change a diaper, plan an invasion, butcher a hog, design a building, balance accounts, take orders, give orders, cooperate, act alone, solve an equation, analyze a new problem, pitch manure, program a computer, cook a tasty meal, fight efficiently and die gallantly! In a world of dogmatic specialists, it's the GENERALIST who ends up running the show. "A jack of all trades?? Yes!!!

### **"Specialization is for insects"**

Ok, so I'm not a executive chef in Sandton. Despite my lack of genius, being a Jack of all trades has worked well for me. I've always worked with small teams where being flexible and willing to learn was seen as a huge asset. I wouldn't call myself a generalist, but I wouldn't call myself a specialist either." Look far and wide. There are worlds to conquer, and Hornbill is mine to conquer.



## **Son#2**

**D'Arcy Els** born in 1988 - **Not currently working @ Hornbill lodge.** He lives in Noordheuwel Krugersdorp with his wife Simone and 2 children Ulisa and Nikilaigh. Despite his young age and arrogance D'Arcy is a very talented chef. He is a highly motivated young man and very passionate about food, I am certain he will go on to be one of the shining stars of the future.

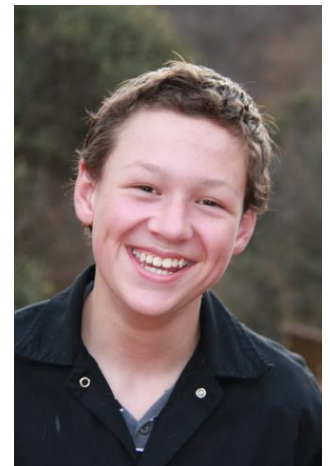




## Son#3

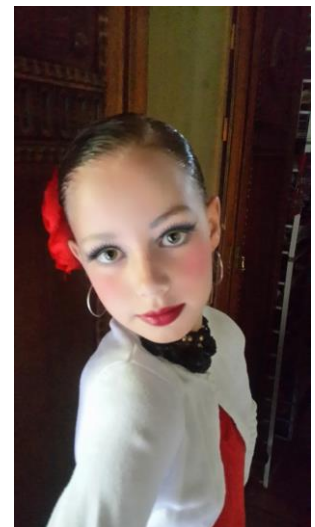
**Lance Neo Els** born in the year 2000 – Bekker School in Magaliesburg

"The best things in life are free  
But you can keep them for the birds and bees  
Now give me money  
That's what I want"



## Granddaughter

**Kaylene Kimiko Els** born 2004 – Florida in Roodepoort (daughter of D'Arcy and Rene)





## **Grandson**

**Benjamin Els** born 2005 – Bekker School in Magaliesburg (son of Cobie SW and Storm Roux)



## **Managers**

**Martha**

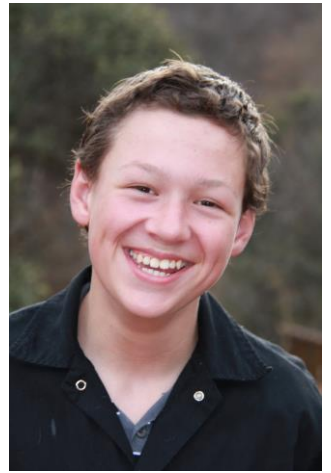


**Ali**





**Head Chef (Cobie), Chef Rodester & Cook Michael & Lance**



**Waiters - Paul, Felix, Raymond**



**Housekeeping - Josephine, Johanna, Victoria, Happiness**



**Groundsman - James**



## Paramedics Level 3 - Cobie Els Jnr



## Level 1 – Cobie Snr



## Level 1 – Lance Els





## Annual Events Revolution NYE

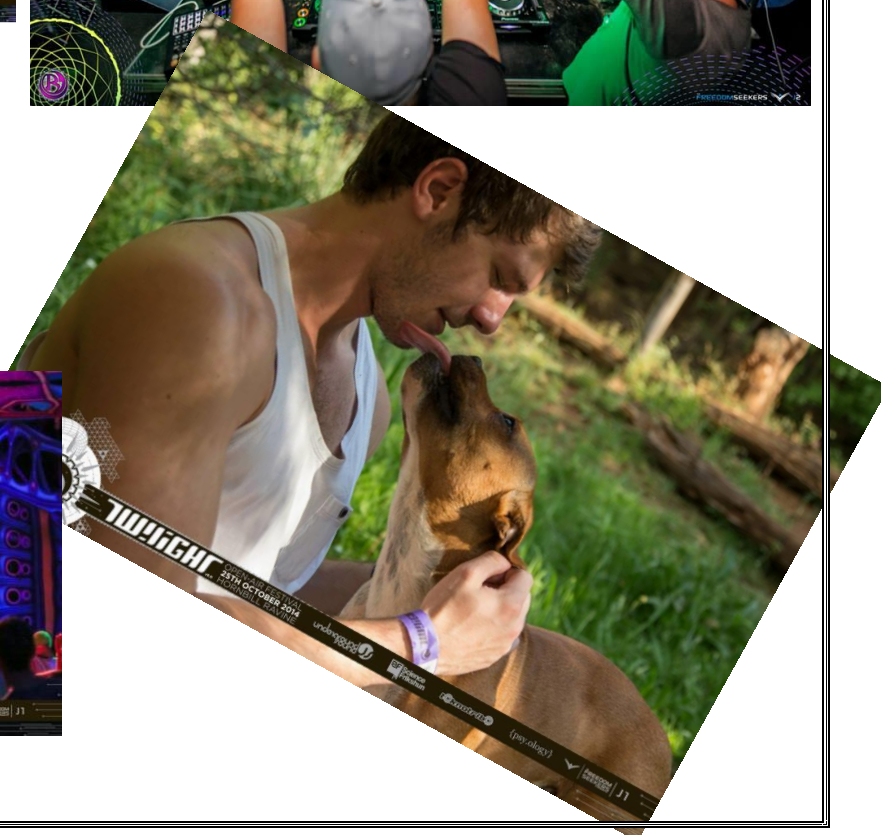


### REVOLUTION – New Years Eve Open Air Music Festival

Close your eyes and listen intimately, in the distant future you will hear the call, allow your heart and soul to follow the beckoning, as the time has come to rise up and DANCE, can you feel it – the voice of REVOLUTION is upon us, let it draw you in as you take each breath – let your voice be heard In the spirit of change and renewal – free your body, free your mind as it explores the journey through melodic bliss and allows every inch of your being to be liberated! Join us in this celebration of unity as the tribes of Jhb underground dance music come together to present this earth quaking, mind baking, soul shaking outdoor festival!!!

REVOLUTION is the place where you leave all inhibitions in the land that is reality – march onto the dance floor as the sun dwindles into a beckoning night and the celebrations of artistic and musical freedom are shared and embraced in unison, comrades side by side as one - beating like a heart, as one year comes to a close and a new fresh instance dawns with the rising of the New Years sun

Bring on the sunshine; bring on the fun as our excitement intensifies for this approaching season of musical freedom and self-expression.











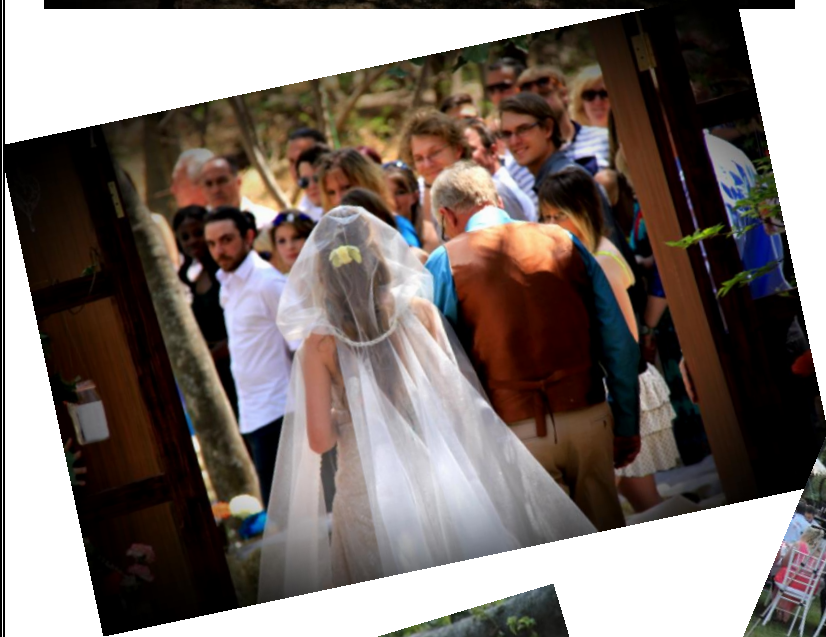
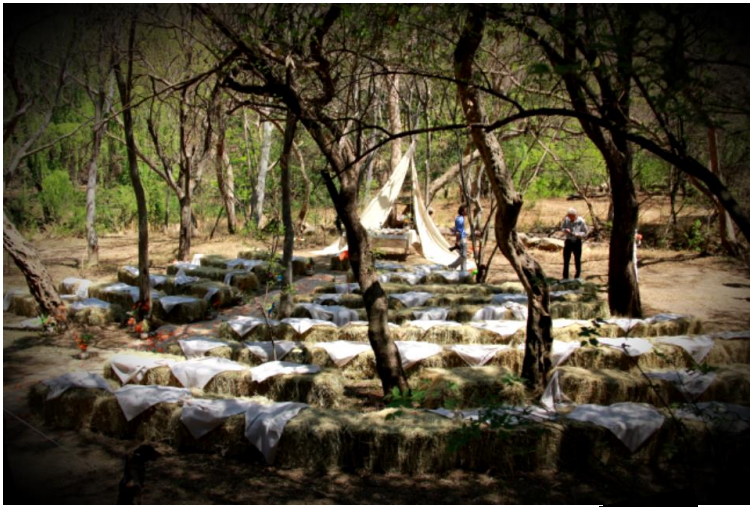


## **Weddings**

For Quotes contact Cobie 082 900 7107



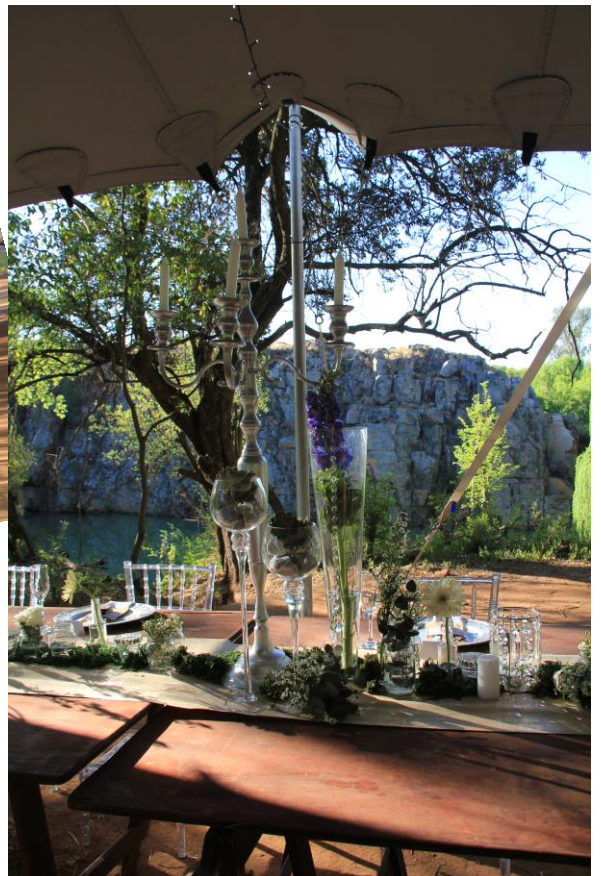














## **Reservation Policy**

A deposit of 50% is required as confirmation of the booking.  
The full balance is payable on arrival.  
Credit card facilities available for Visa / Mastercard  
No cheques accepted

Check in time is from 14:00  
Check out time is before 11:00  
Please inform us of estimated time of arrival.



## **Need to Know Numbers**

Room Service + Reception

082 900 7107

S A P S Magaliesburg

014 577-1315

Dr Anton Martin G.P.

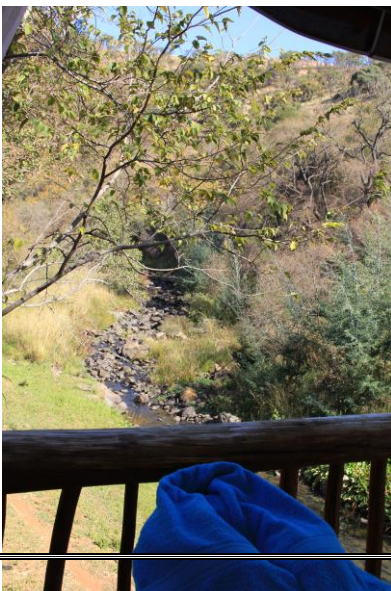
014 577-1047



Netcare Ambulance & Emergency Services

082 911

**Running waters SPA**  
**Bookings 082 900 7107 Cobie**





## **Camping and Caravanning**



## **Ablution Facilities**







# GAUTENG PROVINCE

ECONOMIC DEVELOPMENT  
REPUBLIC OF SOUTH AFRICA

## GAUTENG LIQUOR BOARD LIQUOR ACT NO 2 OF 2003

ADVICE OF ANNUAL RENEWAL FEES PAYABLE IN RESPECT OF A LIQUOR LICENSE FOR THE YEAR 2017/2018 AS CONTEMPLATED IN SECTION 98 OF THE GAUTENG LIQUOR ACT.

Date of issue of this renewal advice	19-01-2017
Name of Business	HORNBILL LODGE & LEGENDS RESTAURANT
Address of licensed premises	PORTION 96 OF THE FARM ZEEKOEKHOEK 509 J.Q. C/O R24 & R563, MAGALIESBURG, KRUGERSDORP
Municipal Area	KRUGERSDORP
Name of Licence Holder	MURIEL ELS
Licence Type	HOTEL LIQUOR LICENCE
Act Section	23
	2017/2018
	GAU/035728
	GAU6035738S9817
	GAUTENG
	30-01-2008
	29-01-2017
	R6 000-00

above-mentioned fees unless this advice is produced.  
indicated with (\*), the fees payable shall be increased by 50% if the  
he lapse of the renewal period or by 100% if the fees are received  
renewal period----Sections 99 and 100 of the Gauteng Liquor Act 2 of

e original of the Renewal Advice which is obtainable at the Gauteng  
Street, Johannesburg.

DEPOSIT REF: No:

16035738S9817

9 January 2017

LICENSEE BY FNB

LIQUOR BOARD BY FNB

FNB DATE STAMP



TOURISM GRADING COUNCIL  
OF SOUTH AFRICA  
Quality in Tourism

Putting Stars where they belong!

GRADING CERTIFICATE  
Awarded To

HORNBILL LODGE  
MAGALIESBURG



Guest House

Log on to  
[www.tourismgrading.co.za](http://www.tourismgrading.co.za)  
and give us your feedback.

Valid Until 30 November 2017

Chief Quality Assurance  
Officer

Tel: (011) 355 8000 | Web: [www.ecodev.gpg.gov.za](http://www.ecodev.gpg.gov.za)  
Umntho House, Johannesburg | Private Bag X091, Marshalltown, 2107  
[www.gautengonline.gov.za](http://www.gautengonline.gov.za) | Hotline: 0860 428 8364

## **TERMS & CONDITIONS**

### Acceptance of Terms

### Special Offers

#### **All special offers are subject to the following terms.**

A minimum night stay is allocated to each special offer, when booking outside of these stay requirements, the special offer will be returned as sold out or not available.

No cancellations or refunds allowed on any special offer.

Full prepayment is required to secure your booking.

All offers and special offer rates are subject to availability.

Block out dates are applicable, even when not stated.

All rates advertised are on a per night bases unless stated otherwise.

Book in time is from 14:00 till 19:45

If you do arrive before 14:00 you are welcome to spend the extra time on the property exploring or supporting the Restaurant, but you will only be able to check into the room from 14:00

Hornbill Lodge closes at 20:00 and any Guest arriving after that time will only be able to check in at 8:30 the next morning

Legends restaurant is a Steakhouse and unfortunately does not cater for Kosher, Halaal, Vegan and vegetarian's. All supper orders must be placed before 19:30 in the evening

### **Conditions of Residence**

You warrant that you are duly authorized to sign for and bind all persons represented by you or for whom you are responsible ("your party") to these conditions of residence and, failing such authority or regardless of billing instructions, you agree to be personally liable for all amounts arising from the occupation or residence of your party and yourself at the hotel.

You agree to pay not later than at the time of Arrival (unless prior written arrangements have been made with the hotel management) the room rate as determined by Hornbill for the period of residence, the costs of food, beverage and any other amounts relating to such residence together with VAT (if applicable), incurred by you and your party during your stay. You agree that after your departure, the hotel may retain goods left behind by you and authorize the hotel, after giving one month's notice to the address registered by you of its intention to do so, to sell same, privately or publicly, at the hotel's discretion at such price as the hotel may determine and offset the proceeds of such sale against your indebtedness or to hold such proceeds or part thereof for a period of three years pending any claims by you for those proceeds failing which they shall be deemed to have been forfeited to the hotel.

YOU HEREBY AGREE, AS A CONDITION OF YOUR OCCUPATION OF OR RESIDENCE AT THE LODGE, THAT HORNBILL LODGE AND THE OWNER, MANAGER AND/OR OPERATOR OF THE LODGE AND THEIR AFFILIATES AND RESPECTIVE DIRECTORS, OFFICERS, EMPLOYEES, AGENTS AND REPRESENTATIVES SHALL NOT BE RESPONSIBLE OR LIABLE FOR ANY ACCIDENT OR ANY INJURY OR DEATH OF ANY PERSON OR THE LOSS OR DESTRUCTION OF OR DAMAGE TO ANY PROPERTY, WHETHER ARISING FROM FIRE, THEFT OR ANY OTHER CAUSE WHATSOEVER AND BY WHOMSOEVER CAUSED OR ARISING FROM THE NEGLIGENCE OR WRONGFUL ACTS OR OMISSIONS OF HORNBILL LODGE. YOU ACCORDINGLY HEREBY IRREVOCABLY AND UNCONDITIONALLY INDEMNIFY AND AGREE TO HOLD HARMLESS HORNBILL LODGE IN RESPECT OF ANY RESPONSIBILITY AND/OR LIABILITY AS AFORESAID.

### **Booking Terms and Conditions**

The terms and conditions set out below apply to all bookings made at Hornbill Lodge.

### **Pricing**

Prices are subject to change without notice. However, your price is guaranteed once you receive booking confirmation. For the avoidance of doubt, prices do not include any incidental charges. Such charges will be payable by you on your departure. In the event that you fail to pay any charges, it is a condition of your contract with us that you irrevocably authorise us to debit your credit or debit card.

### **Deposits, Prepayments and Cancellations**

A reservation is only guaranteed once a 50% deposit has been paid. Upon arrival the full amount of your stay is payable upfront. We do not give refunds on any bookings made at Hornbill Lodge under any circumstances. However, should more than one month's notice be given, and only if we are able to fill the number of nights you have booked, we will try to offer you an alternative date. Alternative dates, if available, will be offered for up to six months from the cancelled date (ie, a cancelled booking in June 2015 would be honoured up until December 2015). In the event of a cancellation by us, our liability shall be limited to the return in full the monies paid.

We regret that in the event of leaving early for any reason, NO REFUNDS will be given. May we remind you that your booking is a legally binding contract and in the event of cancellation or curtailment no refund will be given. This also applies to weather conditions, over which we have no control. Therefore if you choose to cancel your booking due to weather, no refunds will be offered.

Please note any damage to site facilities left in an unsatisfactory state will incur extra charges.

We reserve the right to cancel a tentative reservation. Tentative bookings will automatically expire at 18:00 in the afternoon.

We regret that no cheques, foreign currency, or travellers' cheques are accepted.

However, we do accept ALL credit cards

### **Arrival and Departure**

Rooms are available from 14:00 on the day of arrival. Rooms must be vacated at 10:00 on the day of departure, unless otherwise arranged with the owner.

If you do arrive before 14:00 you are welcome to spend the extra time on the property exploring or supporting the Restaurant, but you will only be able to check into the room from 14:00

Hornbill Lodge closes at 20:00 and any Guest arriving after that time will only be able to check in at 8:30 the next morning

BURNING OF CIGARETTES / CANDLES / INCENSE IS NOT PERMITTED IN ROOMS

DRUGS - ILLEGAL DRUGS ARE BANNED. POSSESSION OR USAGE OF DRUGS CAN LEAD TO POLICE REPORTING AND PROSECUTION.



LOSS - MANAGEMENT TAKES NO RESPONSIBILITY WHATSOEVER FOR ANY LOSS SUFFERED BY ANY GUEST / VISITOR. WE URGE YOU NOT TO LEAVE VALUABLES IN ROOMS. THE LODGE WILL NOT BE RESPONSIBLE FOR ANY THEFT. KEEP MONEY AND OTHER VALUABLES ON YOUR PERSON AT ALL TIMES.

ANTI-SOCIAL BEHAVIOUR - IS UNACCEPTABLE. THIS INCLUDES THREATENING OR DEMEANING ANY PERSON OR ANY STAFF MEMBER. DAMAGE TO ANY PROPERTY, GRAFFITI, THEFT OF ANY PROPERTY, PHYSICAL OR SEXUAL HARASSMENT.

### **Cancellations**

We do not give refunds on any bookings made at Hornbill Lodge under any circumstances. However, should more than one Week's notice be given, and only if we are able to fill the number of nights you have booked, we will try to offer you an alternative date. Alternative dates, if available, will be offered for up to six months from the cancelled date (ie, a cancelled booking in June 2015 would be honoured up until December 2015). In the event of a cancellation by us, our liability shall be limited to the return in full the monies paid.

### **Refunds**

We regret that in the event of leaving early for any reason, NO REFUNDS will be given. May we remind you that your booking is a legally binding contract and in the event of cancellation or curtailment no refund will be given. This also applies to weather conditions, over which we have no control. Therefore if you choose to cancel your booking due to weather, no refunds will be offered. Please note any damage to site facilities left in an unsatisfactory state will incur extra charges.

### **Changes to These Terms and Conditions**

Hornbill Lodge reserves the right to update and/or amend the Terms and Conditions from time to time and without any notice, and you are accordingly encouraged to check the Website regularly. Any such change will only apply to your use of this Website after the change is displayed on this Website. If you use this Website after such updated or amended Terms and Conditions have been displayed on this Website, you will be deemed to have accepted such updates or amendments.

### **Camping Terms and Conditions**

#### **Liability**

The owners of Hornbill are absolved of all liability for accidents to caravans, tents, and guests and from any responsibility for loss or damage to personal property.

We aren't responsible for any loss or damage to these. If you leave any personal possessions behind at the end of your holiday we will try to return them but we are not responsible for anything that is left.

The owners of the park reserve the rights to ask guests not observing the conditions to leave the park without refunds and with immediate effect.

Ablution Facilities

Ablution Facilities are 100 m from Camp Site

#### **Pets**

Well-behaved dogs are welcome, but must be kept on leads at all times. Please be responsible for cleaning up after your pets. Acceptable breeds only accepted onsite - please contact us for more information.

#### **Hornbill Dogs**

Please note, we have 9 dogs that are resident at Hornbill. These dogs are working animals, they are friendly but please ensure children are supervised if stroking the dogs. We welcome well-behaved dogs. We do reserve the right to charge extra for cleaning and repair costs if your dog damages our furniture and soft furnishings. Acceptable breeds only accepted onsite - please contact us for more information.

#### **Supervision of Children**

Children must be accompanied when using the toilet block facilities. Please be aware of where your children are and what they are doing.

#### **Noise**

Please consider other guests and keep barking dogs to a minimum, especially after 9.00pm. Music is not permitted on site.

#### **Visitors**

Campers are welcome to have visitors, but they must report to reception and pay a visitor fee before entering the site.

### **Cancellations**

We do not give refunds on any bookings made at Hornbill Lodge under any circumstances. However, should more than one week's notice be given, and only if we are able to fill the number of nights you have booked, we will try to offer you an alternative date. Alternative dates, if available, will be offered for up to six months from the cancelled date (ie, a cancelled booking in January 2017 would be honoured up until July 2017). In the event of a cancellation by us, our liability shall be limited to the return in full the monies paid.

### **Refunds**

We regret that in the event of leaving early for any reason, NO REFUNDS will be given. May we remind you that your booking is a legally binding contract and in the event of cancellation or curtailment no refund will be given. This also applies to weather conditions, over which we have no control. Therefore if you choose to cancel your booking due to weather, no refunds will be offered. Please note any damage to site facilities left in an unsatisfactory state will incur extra charges.